


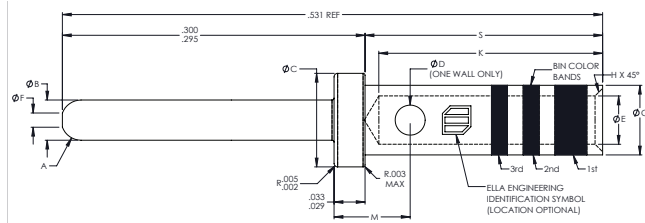


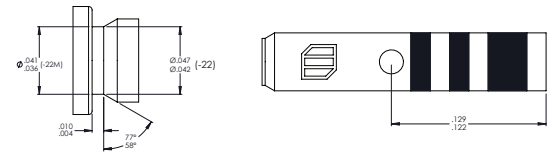
M39029/58 MIL-SPEC ELECTRICAL PIN CONTACT

FOR MIL-DTL-38999 SERIES I, II, III AND IV,
AND MIL-DTL-55302/69 AND MIL-DTL-83733 CONNECTORS

IMAGE	MILITARY PART NUMBER	ELLA ENGINEERING PART NUMBER	PIN/SOCKET	MATING END SIZE	TYPE	CLASS
	M39029/58-360	M058-360-22L	PIN	22	A	B
	M39029/58-363	M058-363-20L	PIN	20	A	B
	M39029/58-364	M058-364-16L	PIN	16	A	B



BIN CODES 360, 363 AND 364



SIZES 22 AND 22M ONLY

MATERIAL AND FINISH | PIN CONTACT: COPPER ALLOY/GOLD PLATED

M39029/58			CONTACT DIMENSIONS						
CONTACT SIZE	MILITARY PART NUMBER	ELLA ENGINEERING PART NUMBER	A RADIUS	ØB	ØC	ØD	ØE	ØF	ØG
22	M39029/58-360	M058-360-22L	.020 .010	.0305 .0295	.062 .060	.022 .018	.0355 .0335	.011 MAX	.048 .046
20	M39029/58-363	M058-363-20L	.025 .015	.041 .039	.094 .091	.032 .026	.048 .046	.015 MAX	.070 .068
16	M39029/58-364	M058-364-16L	.025 .020	.0635 .0615	.130 .127	.042 .036	.068 .066	.030 .011	.103 .101

M39029/58			CONTACT DIMENSIONS (CONTINUED)						
CONTACT SIZE	MILITARY PART NUMBER	ELLA ENGINEERING PART NUMBER	H	K MIN	M	S	1 ST BAND	2 ND BAND	3 RD BAND
22	M39029/58-360	M058-360-22L	.005 .003	.141	N/A	.237 .231	Orange	Blue	Black
20	M39029/58-363	M058-363-20L	.010 .005	.209	.078 .072	.237 .231	Orange	Blue	Orange
16	M39029/58-364	M058-364-16L	.010 .005	.209	.088 .082	.237 .231	Orange	Blue	Yellow