


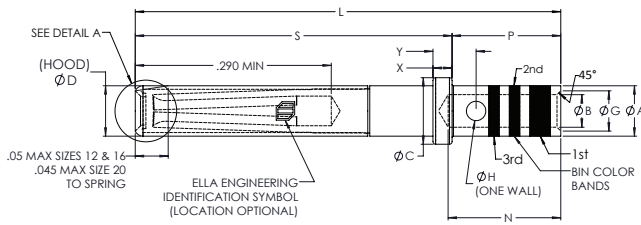


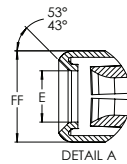
## M39029/5 MIL-SPEC ELECTRICAL SOCKET CONTACT

FOR MIL-DTL-26482 SERIES 2, A581703 SERIES 3, MIL-DTL-83723 SERIES I AND III,  
AND MIL-DTL-83733 CONNECTORS, MIL-DTL-12883/40, AND /41 RELAY SOCKETS

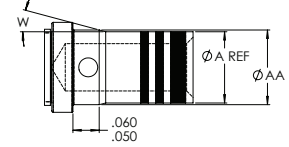
IMAGE	MILITARY PART NUMBER	ELLA ENGINEERING PART NUMBER	PIN/SOCKET	MATING END SIZE	WIRE ACCOMMODATION	TYPE	CLASS
	M39029/5-115	M005-115-20L	SOCKET	20	20-24 AWG	A	B
	M39029/5-116	M005-116-16L	SOCKET	16	16-20 AWG	A	B
	M39029/5-118	M005-118-12L	SOCKET	12	12-14 AWG	A	B



BIN CODES 115 AND 116



BIN CODES 115 AND 116



BIN CODES 117, 118 AND 119 ONLY

**MATERIAL AND FINISH** | SOCKET CONTACT: COPPER ALLOY/GOLD PLATED | SOCKET CONTACT HOOD: PASSIVATED STAINLESS STEEL

M39029/5			CONTACT DIMENSIONS								
CONTACT SIZE	MILITARY PART NUMBER	ELLA ENGINEERING PART NUMBER	ØA	ØB	ØC	ØD	ØE MIN	ØG	ØH	L MAX (REF)	N
20	M39029/5-115	M005-115-20L	.078 .076	.050 .048	.103 .100	.078 .076	.0415	.066 .056	.032 .026	.675	.187 .155
16	M39029/5-116	M005-116-16L	.103 .101	.068 .066	.133 .130	.113 .110	.064	.092 .078	.042 .036	.759	.284 .250
12	M39029/5-118	M005-118-12L	.151 .148	.102 .098	.190 .187	.161 .158	.0955	.136 .116	.042 .036	.759	.284 .250

M39029/5			CONTACT DIMENSIONS (CONTINUED)									
CONTACT SIZE	MILITARY PART NUMBER	ELLA ENGINEERING PART NUMBER	P	S	W°	X	Y	ØAA	FF MIN DIA.	1 <sup>ST</sup> BAND	2 <sup>ND</sup> BAND	3 <sup>RD</sup> BAND
20	M39029/5-115	M005-115-20L	.171 .160	.485 .479	N/A	.033 .029	.068 .053	N/A	.060	Brown	Brown	Green
16	M39029/5-116	M005-116-16L	.257 .246	.500 .494	N/A	.048 .044	.085 .068	N/A	.087	Brown	Brown	Blue
12	M39029/5-118	M005-118-12L	.257 .246	.500 .494	16° 14°	.048 .044	.085 .068	.158 .155	.125	Brown	Brown	Gray