


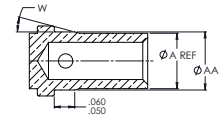
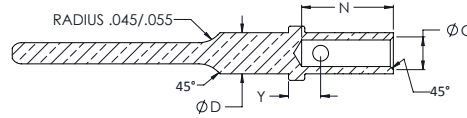
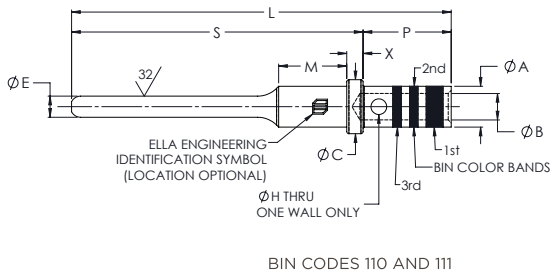


M39029/4 MIL-SPEC ELECTRICAL PIN CONTACT

FOR MIL-DTL-26482 SERIES 2, AS81703 SERIES 3,
MIL-DTL-83723 SERIES I AND III, AND MIL-DTL-83733 CONNECTORS

IMAGE	MILITARY PART NUMBER	ELLA ENGINEERING PART NUMBER	PIN/SOCKET	MATING END SIZE	WIRE ACCOMMODATION	TYPE	CLASS
	M39029/4-110	M004-110-20L	PIN	20	20-24 AWG	A	B
	M39029/4-111	M004-111-16L	PIN	16	16-20 AWG	A	B
	M39029/4-113	M004-113-12L	PIN	12	12-14 AWG	A	B



MATERIAL AND FINISH | PIN CONTACT: COPPER ALLOY/GOLD PLATED

M39029/4			CONTACT DIMENSIONS								
CONTACT SIZE	MILITARY PART NUMBER	ELLA ENGINEERING PART NUMBER	ØA	ØB	ØC	ØD	ØE	ØG	ØH	L MAX (REF)	N
20	M39029/4-110	M004-110-20L	.078 .076	.050 .048	.103 .100	.078 .076	.041 .039	.066 .056	.032 .026	.720	.187 .155
16	M39029/4-111	M004-111-16L	.103 .101	.068 .066	.133 .130	.103 .101	.0635 .0615	.092 .078	.042 .036	.821	.284 .250
12	M39029/4-113	M004-113-12L	.151 .148	.102 .098	.190 .187	.151 .148	.095 .093	.136 .116	.042 .036	.821	.284 .250

M39029/4			CONTACT DIMENSIONS (CONTINUED)									
CONTACT SIZE	MILITARY PART NUMBER	ELLA ENGINEERING PART NUMBER	P	S	W°	X	Y	ØAA	M	1 ST BAND	2 ND BAND	3 RD BAND
20	M39029/4-110	M004-110-20L	.171 .160	.549 .543	N/A	.033 .029	.068 .053	N/A	.130 .125	Brown	Brown	Black
16	M39029/4-111	M004-111-16L	.257 .246	.564 .558	N/A	.048 .044	.085 .068	N/A	.130 .125	Brown	Brown	Brown
12	M39029/4-113	M004-113-12L	.257 .246	.564 .558	16° 14°	.048 .044	.085 .068	.158 .155	.120 .115	Brown	Brown	Orange